



# ANNUAL PROGRESS REPORT

2013-14

# RAJASTHAN LIVESTOCK DEVELOPMENT BOARD

*THE SIA*

*FOR*

NATIONAL PROJECT  
FOR  
CATTLE & BUFFALO BREEDING

# **PREFACE**

Livestock sector play an important role in socio-economic development of the state. This sector also plays a critical role in providing the nutritional security and supplementing family income. Livestock are the best insurance against drought and famine and generate gainful employment in rural areas of Rajasthan. According to NRLM report, Livestock sector tops in rural employment with 4.5 percent growth against 1.75 for all sectors and 1.1 for Agriculture. This sector has also the highest potential for rural self-employment generation at the lowest possible investment per unit. Development of Livestock sector, therefore, is critical to rural prosperity.

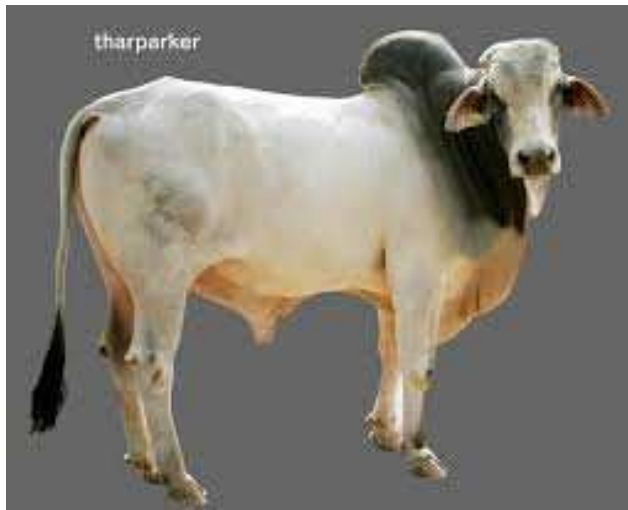
Rajasthan has rich and diverse genetic resources with nine well defined cattle breeds. The important breeds of cattle in the State are Tharparkar, Rathi, Gir, Kankrej, Nagouri, Haryana, Malvi, Sanchori and Mehwati. Murrah buffalo is the preferred breed found in Rajasthan although Surti is also popular in the southern parts of Rajasthan. The cattle and buffalo genetic resources with vast population of 12.12 million and 11.09 million comprising large population of non- descript cattle are widely distributed in diverse agro ecological regions. Rajasthan possess 10.69 percent of the total animal population of the country and contribute to almost 11 percent of the milk production. As per the livestock census of 2007, there were 56.66 million animals.

Milk is a major source of nutritious food to millions of people and only acceptable source of animal protein for large vegetarian segment of population in Rajasthan. The per capita availability of milk increased from 371 gm per day in 2003-04 to 538 gm per day in 2011-12. Modern animal breeding technologies for faster multiplication of genetically superior germplasm have contributed significantly to increase in milk production. The annual average growth rate in milk production in Rajasthan stood at 4.3 percent during 2008-09 to 2012-13 with the milk production rising from 11.9 million MT to 13.9million MT in 2012-13.

Keeping in view the importance of livestock sector in socio-economic development, Rajasthan Livestock development Board was established as State implementing agency for implementation of National Project for Cattle and Buffalo. The National Project on Cattle and Buffalo breeding was initiated in October 2000 for a period of 10 years. The project envisages development and conservation of important indigenous breeds and genetic up gradation of livestock resources.

## **INDEX**

<b>S. No.</b>	<b>Particulars</b>	<b>Page No.</b>
A	Overview & Mandate of RLDB	5
B	Livestock Resources of Rajasthan	8
C	Liquid nitrogen distribution system	10
	1. Procurement of Liquid Nitrogen	10
	2. Distribution of Liquid Nitrogen	12
	3. Strengthening of LN Storage and supply system	12
D	Frozen Semen Network	13
	1. Strengthening of semen station for LN transportation and distribution system	13
	2. Strengthening of Bull Mother Farm at Bassi	13
	3. Strengthening of semen station for AI network	13
	4. Establishment of New Semen Station	13
	5. Procurement of AI bulls	14
	6. Strengthening of Semen Depots and Establishment of Semen Depots	14
	7. Frozen semen production & supply	14
E	Artificial Insemination Programme	16
	1. Strengthening of field Artificial Insemination Network	16
	2. Conversion of Stationary A.I. centre in to Mobile centre	20
F	Production of Quality Bull	21
	1. Progeny Testing Programme	22
	2. Implementing ONBS with MOET	22
	3. Milk Recording Scheme	23
	4. Rearing of male Calves at Calf Rearing Station	24
	5. Rearing of Male Calves at farmer's Doorstep	24
G	Bull Distribution For Natural Service	25
H	Manpower Development	25
	1. Training of AI Workers	25
I	NMPS Under RKVY	26
J	Miscellaneous	27
	1. Fertility Camps	27
	2. State Level Cattle Fairs	27
	3. "DUGDH AKSHAY" Livestock Insurance Scheme (Centrally Sponsored Scheme of GOI)	30
K	Other Activities	33
	1. Sheep & Wool Improvement Scheme (SWIS) during 11th Plan (2009-10 to 2011-12)	33
	2. Pilot Study on "Livestock centric Intervantion for Livelihood Improvement in Nagour District in Rajasthan.	34
L	NPCBB PHASE-II : PHYSICAL PROGRESS (CONSOLIDATED)	35
M	Physical & Financial Progress of NPCBB Phase-II	37
N	RLDB Balance-Sheet as on 31 March 2014	39
O	RLDB Reciept of Schemes as on 31 March 2014	Annexure-D
P	RLDB Payments of Schemes as on 31 March 2014	Annexure-E



## A. Overview & Mandate of RLDB

With the purpose to promote Breeding & Development of all species and breeds of economic importance and to introduce, promote and adopt appropriate technology for improving all aspects of Livestock production and their productivity, an **autonomous body** in the name of “**RAJASTHAN LIVESTOCK DEVELOPMENT BOARD**” (RLDB) with approved “Memorandum of Association, Rules & Regulations and registered (on 25.03.1998) under the Rajasthan Society Registration Act, 1958 has been setup by the State Government.

RLDB has been designated as the State Implementing Agency (SIA on 26.02.2001) for implementing the Centrally Sponsored schemes - National Project for Cattle and Buffalo Breeding (NPCBB)

### ORGANISATIONAL SET-UP

The Governing body (Members of the BOARD) presently comprises of the follows:

Ex-Officio	<b>Chairman</b>	Non Government / Government person nominated by State Government
	<b>Member</b>	Principal Secretary, Animal Husbandry, Rajasthan
	Member	Managing Director, Raj. Coop. Dairy Federation, Jaipur
	Member	Director, Animal Husbandry Rajasthan.,
	Member	Dy. Secretary, Finance (Exp-I) Rajasthan
	<b>Member Secretary</b>	Chief Executive Officer, RLDB, Jaipur, Rajasthan
Appointed by the Government	Member	Representative, Deptt. of AH & D.D., Govt. of India
	Member	Two Managing Directors of district Milk Unions in the state
	Member	Two professionals (Experts in the area of Livestock development)
	Member	A nominee representing collaborating bilateral / international agencies.
	Member	Director (Research) State Agricultural University

RLDB is managed by a core group of professionals and a limited supporting staff as follows:

S.No	DESIGNATION	NAME OF OFFICER	SINCE
1	CHAIRMEN	Sh. Brijendra Singh Soopa	15.05.2012-09.12.2013
		Sh.Ashok sampatram	20.01.2014 to Contd.
2	Chief Executive Officer(C.E.O)	Dr. Mahesh Katara	11.02.2013 to Contd
3	Manager	Dr. Shiv Kumar Sharma	11.02.2013 to Contd
4	Manager (Finance&Accounts)/F.A.	Sh.Kamal kumar singhani	28.03.2013-17.06.2013
		Sh.Virendra Mehta	18.06.2013 to Contd
5	Executive ( MIS & Database)	Dr. Prakash Sharma	01.08.2012 to Contd
6	Executive ( Breeding Services)	Dr. Pritpal Singh Kalra	23.10.2009-15.12.2013
7	Executive (Quality Assurance)	Dr. Anil Kaushik	01.08.2012 to Contd
8	AAO-II	Sh.Purshottam Lal Gupta	31.07.2013 to Contd
9	Personal Assistant	Sh. Vinod Jangid	31.07.1999-25.04.2013
10	Personal Assistant	Sh. Kamlesh Jain	30.11.2009-18.12.2013
11	Jr. Accountant	Sh. Ravindra Pareek	01.08.2012-05.04.2013
12	Jr. Accountant	Sh. Alok Kasliwal	03.06.2013 to Contd
13	U.D.C.	Sh. Sanjay Goyal	10.04.2013 to Contd

### **PARTICIPATING AGENCIES:**

The participating agencies in the State are as follows:

1. Animal Husbandry Department
2. Co-operative Milk Federations/Unions
3. Rajasthan University of Veterinary and Animal Science, Bikaner.
4. Non-Governmental Organizations (NGO's)
5. Breeders' Associations
6. Gaushalas
7. Any other agency engaged in activities related to cattle and buffalo development

### **SALIENT FEATURES OF NPCBB:**

**NATIONAL PROJECT FOR CATTLE AND BUFFALO BREEDING (NPCBB)** envisages inter-alia:

- Radically improving coverage of bovine population under organized breeding programmes.
- Delivery of breeding inputs at the farmer's doorstep.
- Improvement in quality of bulls used for natural service.
- Conservation of indigenous breeds.
- Imposing a levy on services and inputs to make the agencies providing the same self sustaining through recycling of receipts thus accrued.
- Strict quality control of services and inputs.
- Optimum capacity utilization in institutional infrastructure.
- Developing synergies among different players.

- Putting in place, field recording and progeny testing programmes through networking for indigenous cattle, crossbred cattle and buffaloes, to identify and propagate superior germ-plasm for genetic improvement.
- Making training and retraining of professionals and AI workers an integral part of the scheme.

## **OBJECTIVES:**

The project envisages 100% grant-in-aid to implementing agencies to achieve the following objectives:

- To arrange, delivery of a vastly improved artificial insemination service at the farmer's doorstep.
- To progressively bring **80%** breedable females among cattle and buffalo under organized breeding through Artificial insemination or Natural service by high quality bulls within a period of ten years.
- To undertake breed improvement programmes for indigenous cattle and buffalo breeds so as to improve their genetic qualities as well as their availability.
- To provide quality breeding inputs in the breeding tracts of important indigenous breeds so as to prevent the breeds from deterioration and extinction.

## **PROJECT COMPONENTS:**

All activities consistent with the objectives and essential for implementation of NPCBB are being covered under the scheme. The Project components given below constitute an indicative but not detailed list:

- **Streamlining storage and supply of liquid nitrogen:** This is being accomplished by sourcing supplies from industrial gas manufacturers and setting up infrastructure for bulk transport and storage.
- **Introduction of quality bulls with high genetic merit:** This is being accomplished through Field Recording programmes by AHD, Dairy Cooperatives, Breeders Associations and other suitable agencies. Re-organisation and intensification of Progeny Testing Programmes and setting up of Open Nucleus Breeding Systems (ONBS) are under consideration.
- **Promotion of private mobile Artificial Insemination (AI) practice for doorstep delivery of AI services:** This is being accomplished through private AI workers, with support in the form of equipments, stipend during initial practice period and provision of regular supplies of liquid nitrogen and frozen semen.
- **Conversion of existing stationary Government AI centres to mobile practice:** This is being achieved by providing portable liquid nitrogen containers, supply of quality genetic inputs and authorizing private practice at farmer's doorstep to provide more effective and timely AI services to the breedable bovines.

- **Quality control of goods and services at sperm stations, semen banks and training institutions:** Is being achieved by appropriate strengthening of these institutions, in consonance to the standards laid down for bull/semen stations and establishment of a computer network throughout the state for close monitoring.
- **Study of breeding systems in areas out of reach of AI:** This is necessary not only to create an understanding of the breeding systems in vogue and farmer's preferences, but also to bring about systematic improvement in these areas in far larger number of uncovered animals than those presently covered under AI. Efforts are being made to provide access to good quality breeding bulls in such areas for natural mating to avoid degeneration of their stock.
- **Other allied activities:** Pre-project surveys, project preparation and appraisal.

## B. Livestock Resources of Rajasthan

The livestock has increase from 56.66 million to 57.74 million during the period from 2007 to 2012(Livestock census 2012). This increase has been observed substantially or marginally in all the districts of Rajasthan. The livestock of the state comprised of 23.08% cattle & 22.47% buffalo. The cattle and buffalo population are 13.32 million & 12.97 million respectively & it showed 9.94 % & 16.99% increased in population. The breedable cattle and buffalo population in the state is 6.40 million and 6.87 million respectively.

**Livestock Population**

**(Table: 1 )**

S. No	SPECIES	POPULATION		
		2007	2012	% Change
1	CATTLE	12119512	13324462	9.94
2	BUFFALOES	11091974	12976095	16.99
3	SHEEP	11189855	9079702	-18.86
4	GOATS	21502996	21665939	0.76
5	HORSES & PONIES	25438	37776	48.5
6	Mules	886	3375	280.93
7	Donkeys	102130	81468	-20.23
8	CAMELS	421836	325713	-22.79
9	PIGS	208556	237674	13.96
<b>TOTAL</b>		<b>56663183</b>	<b>57732204</b>	<b>1.89</b>

(Source :- DAH)

### **Cattle and Buffalo breeds in Rajasthan and their distribution.**

Rajasthan is home tract to many important breeds of livestock. Prominent dairy cattle breeds are Tharparkar, Rathi, Gir and Kankrej and prominent dual purpose cattle breeds are Haryana, Nagauri and Malvi breeds. The Tharparkar breed is mostly found in Jaisalmer, Barmer & Jodhpur districts. The Rathi breed is seen mostly in Bikaner, Sri Ganganagar & part of Churu district. Gir is not a native breed of Rajasthan and is concentrated mostly in Ajmer, Bhilwara, Pali, Baran, Tonk & Kota districts. This is because of mass migration of Gir animals from Gujarat to Kishangarh in Ajmer, which took place



during wedding of one of the Maharaja of Kishangarh in Gujarat. The Malvi breed of draught cattle is having its home tract in Kota district & Nagauri breed have its home in Nagaur district.

### Status of Cattle & Buffalo

The dairy cattle and buffalo are the main contributory animals to the agrarian economy of the state. An overview of cattle and buffalo population of the state since 1961 is as follows:

Source : Livestock Census ( Number in Lacs)

(Table: 2 )

S.No	Item	1961	1972	1977	1983	1988	1992	1997	2003	2007	2012
		1	2	3	4	5	6	7	8	9	10
1	Cattle	131.36	124.70	128.96	135.04	109.16	116.67	121.58	108.53	121.20	133.25
2	Buffalo	40.19	45.92	50.72	60.43	63.40	77.75	97.56	104.50	110.92	129.77
<b>TOTAL</b>		<b>171.55</b>	<b>170.62</b>	<b>179.68</b>	<b>195.47</b>	<b>172.56</b>	<b>194.42</b>	<b>219.14</b>	<b>213.03</b>	<b>232.12</b>	<b>263.02</b>
<b>Ratio (C:B)</b>		<b>3.27 : 1</b>	<b>2.72 : 1</b>	<b>2.54 : 1</b>	<b>2.23:1</b>	<b>1.72 : 1</b>	<b>1.50 :1</b>	<b>1.25 :1</b>	<b>1.04 :1</b>	<b>1.09:1</b>	<b>1.03:1</b>
<b>% increase</b>		<b>24</b>	<b>-0.54</b>	<b>5.31</b>	<b>8.07</b>	<b>-11.72</b>	<b>12.66</b>	<b>11.28</b>	<b>-2.79</b>	<b>8.96</b>	<b>13.32</b>

The above data reveal that the cattle population in 2012 has increased 12.05 lachs, whereas buffalo population has increased 18.85 lachs in comparison to 2007 census. In comparison to 1961 it is clear that cattle population is near about same while buffalo population has increased more than three folds. The overall growth trends further depict that farmers have a preference more for high milk yield rather than for draft. The situation very well signifies the increasing tilt of the livestock owners towards buffalo rearing on one hand while on the other hand warrants stringent work outs to be carried out for appropriate cattle conservation and growth measures.

With the advent of intensive mechanization in agricultural operations some of the indigenous breeds (Draught breeds) are visualized to have outlived their utility and farmers preferences in rearing these animals has declined considerably.

### Milk Production & Productivity in Rajasthan.

Dairy development is one of the main occupations of the rural areas in the state, which, stands second in terms of milk production in the country. The total annual milk production & Productivity data as per Sample Survey – 2012-13 are presented in Table :

**Milk Production, Per Animal Milk Productivity in Rajasthan (2013-14) (Table: 3 )**

Milch Animal	Milk Production ( Million MT )	% Share in Total Milk Production	Milk productivity ( Ltr. Per day )
C.B. Cattle	0.94	06.44	7.749
Indigenous Cattle	4.17	28.63	3.674
Buffalo	7.68	52.71	5.756
Goat	1.78	12.22	0.652
<b>Total</b>	<b>14.57</b>	<b>100.00</b>	<b>----</b>

( Source: Department of Animal Husbandry, Rajasthan )

- a. Contribution of buffalo in total milk production is 52.71% with a net increase of 0.77 % over the previous milk production, followed by indigenous cattle (28.63%), goat (12.22 % ) and cross bred cow (06.44%). However, the productivity of Cross bred cows is maximum at 7.749 ltrs. Per day among all dairy animals. Thus, the indigenous cattle is also contributing significantly in milk

production, especially in Arid & Semiarid areas of the state, though its productivity is much lower than the cross bred cows and buffaloes.

**b.** Increase in milk production boosted the per capita availability of milk to the population of Rajasthan. In 1991-92, the per capita milk availability was 275 gm. & in 2010-11, the per capita milk availability is 538 gm, which is above the ICMR recommended level of 280 gm. per day. The average milk productivity of cross bred cows, Indiginous cows & buffaloes is only 7.67, 3.67 & 5.62 Kg./day respectively with wide inter district variations in the milk yield.

**Milk yield & Milk Production Species wise.**

**(Table: 4 )**

S.No.	Species	Milk yield per day (Kg.)	Total milk production (000)MT
1.	Cross bred cattle	7.749	0.938
2.	Cow	3.674	4.172
3.	Buffalo	5.756	7.681
4.	Goat	0.652	1.780
	<b>TOTAL</b>	----	<b>14.571</b>

(Source: Department of Animal Husbandry, Rajasthan )

## **C. Liquid Nitrogen Distribution System:**

Liquid nitrogen is the important component of Artificial Programme. The cost and availability of liquid nitrogen are major determining factor for the success of field Artificial insemination programme. Procurement, storage and timely delivery of LN are the important component of LN distribution system. Timely supply of LN is a very crucial aspect of field AI operations. Streamlining storage and supply of liquid nitrogen is being accomplished by sourcing supplies from Industrial gas manufacture or aurorised dealer and setting up infrastructure for bulk transport and storage. The three tier system for delivery of liquid nitrogen is deemed as an effective model for storage and supply of LN. RLDB is having well developed LN distribution network through its 13 indenting officer in various region of the state.

### **1. Procurement of Liquid Nitrogen**

The LN is procured from the bulk manufacturer by private and board’s tanker. Two horizontal board’s tankers with a capacity of 6000 and 10000 liters are being used for procurement of LN from factory site by RLDB and ensure that supply of liquid nitrogen is delivered at indenting officer at time. During the year of 2013-14, 13,33,950 Kg of LN was procured. Liquid nitrogen is stored in silos with the capacity of 3000 and 6000 ltrs by indenting officer situated at regional level. The LN is supplied by RLDB free of cost to all AI center of AH department on FOR basis. However, RLDB is also supplying LN to AI centre of RCDF and NGOs against the payment of Rs 25/- per ltr .

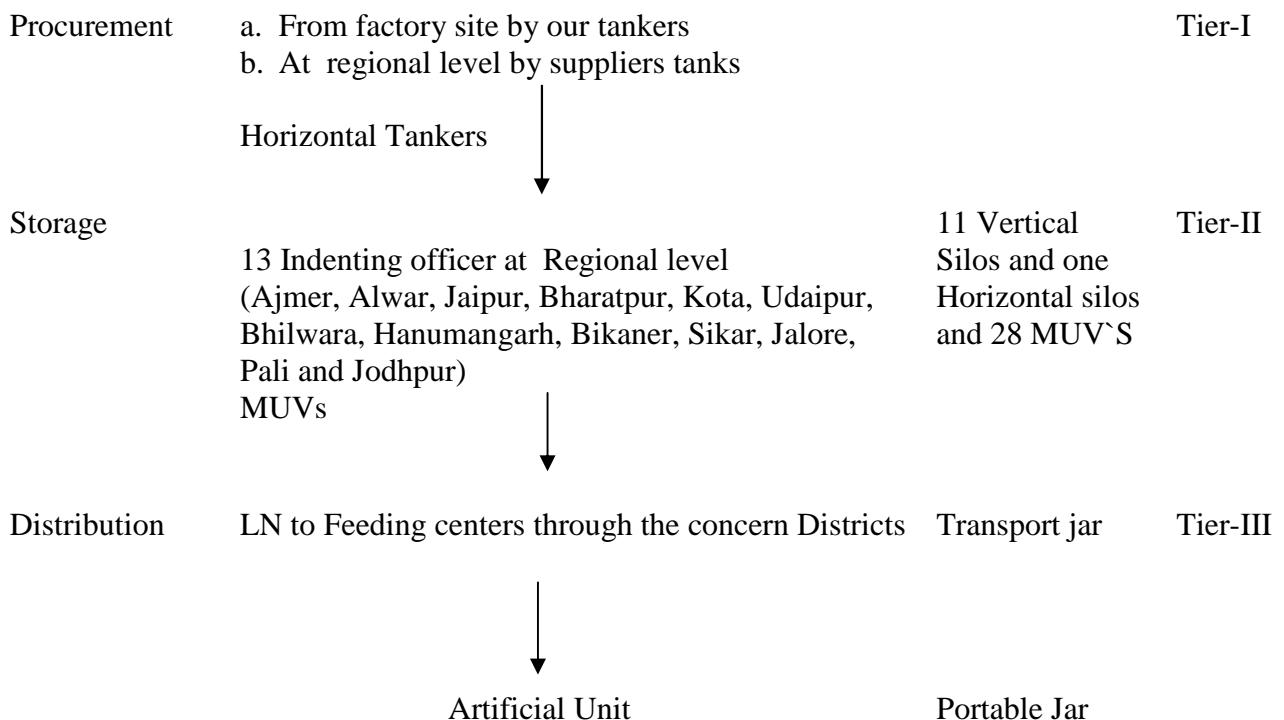
The LN2 distribution system of the state is being managed by RLDB by procuring the LN from Inox Air product Pvt Ltd. Bhiwadi, RLDB has made two types of arrangements viz Ex factory and FOR supply. Procurement of LN directly from the suppliers on Ex factory prices and transport the

same through the two horizontal tankers of 10000 ltrs and 6000 ltrs capacity to strategically located at range head quarters in the state. These horizontal tankers were purchased by RLDB out of AI Fees collected. Liquid Nitrogen is procured from Inox Air Product Pvt. Ltd. Bhiwadi on FOR and Ex-factory basis stored in the vertical silos containing the capacity of 3000-6000 ltrs. These vertical silos are installed at range head quarter. The rates for different indenting officers of AHD approved for 2 years are as follows:-

(Table: 5)

S. No.	Indenting Officer (AD,LSD, AHD) & Releted District	Type of Supply	Basic Rates ofLN2 (Rs. Per KG)
			Inox Air Products Ltd., Bhiwadi 01.12.13 To 31.12.14
1	Ex-Factory	Ex-Fac.	6.93 (atBhiwadi)
2	Kota (Kota, Bundi, Jhalawar & Baran)	FOR	12.96
3	Jodhpur (Jodhpur, Pali, Barmer & Jaisalmer)	FOR	14.21
4	Jalore (Jalore & Sirohi)	FOR	16.83
5	Jaipur (Jaipur, Dausa, Tonk, S.Madhapur)	FOR	10.05
6	Ajmer (Ajmer, Bhilwara, Kuchaman city, Nagore)	FOR	11.51
7	Udaipur (Udaipur, Banswara, Rajsamand, Chittorgarh, Pratapgarh, Dungarpur)	FOR	15.46
8	Bikaner (Bikaner, Hanumangarh, S.Ganganagar, Anupgarh)	FOR	12.58
9	Bharatpur (Bharatpur, Karauli, Dholpur)	FOR	9.71
10	Sikar (Sikar, Churu, Jhunjhunu)	FOR	10.13
11	Alwar (Alwar)	FOR	9.92
12	Pali	FOR	14.70
13	FSB Bassi (FSB Bassi)	FOR	9.98
14	Hanumngarh (Hanumangarh/Srigangangar)	FOR	12.55
15	Bhilwara	FOR	13.09

The board is heavily dependent on the information received from district and indenting officer.



## **2. Distribution of Liquid Nitrogen**

Liquid nitrogen is supplied in transport jar of 40-60 ltrs to the feeding centre through Multi Utility Vehicle. These MUVs are maintained by concerned Joint Officer AH at district level. 28 multi utility vehicles are engaged in the distribution of LN from storage site to feeding centre. RLDB provide the fund to the concerned district for the insurance, tyre tube purchase and POL from the income of AI fees.

A wide range of storage and transport containers were provided under the NPCBB phase-II NMPS and RLDB AI fees .

1. Storage Containers / Vertical Silos: The total capacity of 45000 ltrs LN is being used by 11 Vertical silos and one horizontal containers installed at regional level.
2. Transport containers: Two horizontal tankers and 1516 transport jar with the total capacity of 76271, ltrs LN are being used for transportation of LN.
3. Portable containers: 3700 portable jar are provided by RLDB for Artificial Insemination from 2008-09.

The annual requirement of Liquid Nitrogen of AHD in Rajasthan is about 12.07 Lac Kg. The supply of Liquid Nitrogen received by the various indenting officers of AHD, **Liquid Nitrogen consumed per A.I. and per Centre** (of AHD) in **2013-14** is as follows:

(Table-6)

S. N.	Name of Indenting Officer for LN2	Qty. of LN2 received by Indenting Officer (Kg.)	% Evaporation	LN consumed per AI (Kg.)	LN consumed / Centre / Year (Kg.)
1	Ajmer	124850	26.00	0.40	826.82
2	Bharatpur	110800	32.66	0.63	580.1
3	Bikaner	117600	29.00	0.50	1130.77
4	Jaipur	168600	33.06	0.42	517.18
5	Jodhpur	132200	32.39	0.99	730.38
6	Kota	96000	26.00	0.80	1170.73
7	Udaipur	170000	17.48	0.61	821.25
8	Sikar	158800	27.26	0.38	667.22
9	Bhilwara	108600	44.53	0.78	565.62
10	Hanumangarh	41500	34.19	0.23	314.39
11	Jalore	32000	14.19	0.92	313.72
12	Alwar	73000	39.06	0.48	424.42
	<b>TOTAL</b>	<b>1333950</b>	AVERAGE EVAPORATION 29.65	AVERAGE LN2 CONSUMED PER 0.558	AVERAGE LN2 CONSUMED/Centre/Year 671.88

**Source :** Progress informed by AHD offices

**\*\*Note :** LN<sub>2</sub> consumption of Milk Unions and NGO's not available

## **3. Strengthening of LN Storage and supply system:**

An amount of Rs 314.97 lacs has been utilized for strengthening of LN storage and transport system since inception of NPCBB phase- II to till March, 2014. The districts were provided with Liquid

Nitrogen 1516 Transport jars and 11 vertical silos and one horizontal silo to strengthen their capacities and 28 of them were also provided with Multi-Utility Vehicles (Mahindra Maxx-Pickup and TATA-207) for transportation of LN up to feeding centres / AI points and also for monitoring purposes.

## **D. Frozen Semen Network:**

Sustainable development of animal husbandry sector can be achieved by ensuring better conception rate and faster genetic progress in the population. So supply of quality semen is the prerequisite for planned breeding. The semen should be evaluated, processed, stored and supplied for its subsequent utilization in the field. RLDB procure semen from Frozen Semen Bank, Bassi and GPS Narwa Khinchiyani, Jodhpur & supply to the feeding centres. These semen stations are maintained by Rajasthan Cooperative Dairy Federation (RCDF). Frozen semen Bank Bassi and Narwa Khichiyani have been strengthened by necessary construction and renovation of civil works by RLDB under NPCBB phase-II to meet the future requirement. RLDB provide financial assistance to semen stations under the head of strengthening of LN distribution system, strengthening of bull mother farm, semen production to semen stations, establishment of new semen station and procurement of AI Bull.

1. **Strengthening of semen station for LN transportation and distribution system:-** under this head, a sum of Rs 20.00 lakh each was proposed for FSB Bassi in the year of 2008-09 and for GPS Narwakhichiyani in the year of 2011-12. Full amount of grant has been utilized by RCDF for this purpose. Procurement of a Vertical Silo of 3000 Ltr. Capacity and a generator set for which the amount (20 Lacs) had been made available to the Frozen Semen Bank, Bassi.
2. **Strengthening of Bull Mother Farm at Bassi :-** A sum of Rs 44.00 lakh was transferred to Exotic Nucleus Farm Bassi (RCDF) for construction of conference hall, Doctors Room, new tube wells, road repair, purchase of furniture, hydraulic tractor trolley and sprinkler set for cultivation. The money has been utilized since inception to till March, 2013 for repair of sheds, boundary & other structures; construction of Conference hall and Doctors Room; 03 new tube wells ; road repair and purchase of Furniture, Hydraulic tractor trolley & sprinkler set for fodder cultivation.
3. **Strengthening of semen station for AI network :** . RLDB has been contributing significantly for strengthening of semen station in terms of quality bulls, advance equipments and apparatus. The RLDB has transferred of Rs 38.00 lakh for purchase of equipments. The endeavors of Rajasthan Livestock Development Board in strengthening this semen station can be visualized from the fact that the semen producing capacity of the station has increased significantly. The Frozen Semen Bank, Bassi had a production capacity of 6 lac doses and was producing around 4 lac semen doses in the year 1999-2000. Frozen Semen bank, Bassi had produced 27.27 lac doses in the year of 2013-14. Owing to the quality standards achieved, the Bank has been awarded Grade-B by CMU.
4. **Establishment of New Semen Station :-** In view of the dwindling status of the recognized indigenous breeds of cattle native to Rajasthan, endeavors of the state government have

concentrated on organized breeding programmes for conservation and growth of these breeds. As a result, the state had initiated the process of establishing a new semen station at Narwa Khichiyan in Jodhpur for implementing structured genetic up-gradation programmes for the important indigenous breeds of cows. Rajasthan Co-operative Dairy Federation (RCDF) has been entrusted the job of establishing and managing this new sperm station for establishing a semen production station of a capacity of producing 20 to 25 lac doses per year. GOI has approved an allocation of Rs. 700 lacs in two installments of Rs. 400 lacs & Rs. 300 lacs in the 1st and 2nd year respectively in NPCBB Phase-II. A sum of Rs. 680 lacs were released up to the year 2013-14 to RCDF GPS Narwa khichiyan started semen production from June 2012. Germ Plasm Station had produced 3.25 lac doses in the year of 2013-14

5. **Procurement of AI bulls :-** A sum of Rs 34 lakh has been allotted to the RCDF for FSB Bassi and GPS Narwa Khinchiyan, Jodpur for procurement of 87 AI Bulls. FSB Bassi has purchased 49 bulls of different breed from the funds of NPCBB-II.
6. **Strengthening of Semen Depots and Establishment of Semen Depots :-** To ensure a regular and sustained supply of semen doses to the districts and subsequently to the field A.I centres, new semen depot at Bharatpur has been established under the NPCBB Ph-II. Stranghtening of semen depot has been done at Ajmer, Bikaner, Udaipur, Kota, Jaipur, Jodhpur & Bharatpur headquarters since inception of NPCBB Ph-II to till March-2014. A sum of Rs 30.73 lakh has been utilized for strengthening of all 07 existing semen banks & Rs. 10.01 lacs has been utilized for establishment of New Semen Depot at Bharatpur..
7. **Frozen Semen production and supplies :-** Frozen Semen supply in the state to the artificial insemination centres of AHD and Milk Unions is being made through the **Semen station Bassi & GPS Narwa Khinchiyan, Jodhpur**. The rates approved (01.01.2013 to 31.12.2014) for procurement of semen doses is as follows:

1. **EX Factory** - Rs. 10.00 per straw (for MU)
2. **F.O.R** - Rs. 10.00 per straw (for AHD)

The frozen semen production and distribution in the year 2013-14 is as follows:

**PRODUCTION AND SALE OF FROZEN SEMEN DOSES BY FROZEN SEMEN BANK, BASSI & GPS Narwa Khinchiyan -- 2013-14** **(Table-7)**

S.NO.	BREED OF BULLS	NO.OF BULLS		FSB BASSI		GPS NARWA	
		FSB Bassi	GPS Narwa	PRODUCTION	SALE	PRODUCTION	SALE
1	HF-Pure	11	---	510471	503590	---	---
2	HF-Cross	26	---	525545	539280	---	---
3	Jersey- Pure	7	---	239164	238530	---	---
4	Jersey-Cross	3	---	102776	90900	---	---
5	Tharparkar	1	4	16940	15200	15078	26060

S.NO.	BREED OF BULLS	NO.OF BULLS		FSB BASSI		GPS NARWA	
		FSB Bassi	GPS Narwa	PRODUCTION	SALE	PRODUCTION	SALE
6	Rathi	2	4	27596	23450	16826	28330
7	Nagori	1	0	990	1000	0	0
8	Gir	2	8	127708	121415	82113	87895
9	Kankrej	2	3	5590	5000	17260	4750
10	Haryana	1	1	9714	11200	0	0
11	Murrah Buff.	23	10	1048111	1048025	194011	191129
12	Surti Buff.	2	0	43400	43760	0	0
13	Sahiwal	1	0	69170	58100	0	0
	<b>TOTAL</b>	<b>82</b>	<b>30</b>	<b>2727175</b>	<b>2699450</b>	<b>325288</b>	<b>338164</b>

Source: FSB, Bassi and GPS Narwa khichiyan, Jodhpur

**SALE OF FROZEN SEMEN DOSES FOR ANIMAL HUSBANDRY DEPTT. FSB - BASSI  
2013-14 (Table-8a)**

JDAH	Breed of Animal												
	HF	MB	JR	HFX	Gir	Kank	TPR	JRX	Surati	Rathi	Nagori	Sahiwal	Total
Jaipur	---	210000	---	165000	20000	---	200	20000	---	---	---	---	415200
Bikaner	80400	41350	44800	15050	---	---	2000	2500	---	17150	---	2000	205250
Jodhpur	36000	41575	---	10000	3000	5000	12000	---	---	---	---	---	107575
Udaipur	51660	122640	26420	31520	25200	5000	12000	---	---	---	---	---	312700
Ajmer	64900	71100	14400	28500	10000	---	---	---	---	2100	700	---	191700
Alwar	36600	75535	25050	11600	---	---	---	---	---	---	---	---	148785
Bharthpur	---	105400	9000	47300	4000	---	---	51300	---	---	---	---	217000
Sikar	80100	137205	50850	92700	---	---	---	4600	---	2000	---	---	367455
Kota	33000	58000	16000	7500	35000	---	---	---	---	---	---	---	149500
Bhilwara	15300	13100	---	15000	8000	---	---	---	---	---	---	---	51400
<b>Total</b>	<b>397960</b>	<b>875905</b>	<b>186520</b>	<b>424170</b>	<b>105200</b>	<b>5000</b>	<b>14200</b>	<b>90100</b>	<b>43560</b>	<b>21250</b>	<b>700</b>	<b>2000</b>	<b>2166565</b>

Source: FSB - Bassi, Jaipur

**SALE OF FROZEN SEMEN DOSES FOR ANIMAL HUSBANDRY DEPTT. GPS, Narwa  
Khichiyan- 2013-14 (Table-8b)**

JDAH	Breed of Animal												
	HF	MB	JR	HFX	Gir	Kank	TPR	JRX	Surati	Rathi	Nagori	Sahiwal	Total
Jodhpur	---	52000	---	---	2000	4500	10000	---	---	0	---	---	68500
Bikaner	---	17000	---	---	0	---	0	2500	---	---	---	---	27400
Alwar	---	16000	---	---	6000	---	0	---	---	4000	---	---	26000
Bhilwara	---	24000	---	---	18000	---	0	---	---	0	---	---	42000
Sikar	---	30114	---	---	0	---	8000	---	---	11000	---	---	49114
Udaipur	---	30200	---	---	30200	---	---	---	---	0	---	---	60400
Ajmer	---	15000	---	---	16000	---	---	---	---	2100	---	---	33100
<b>Total</b>	<b>---</b>	<b>184314</b>	<b>---</b>	<b>---</b>	<b>72200</b>	<b>4500</b>	<b>18000</b>	<b>2500</b>	<b>---</b>	<b>27500</b>	<b>---</b>	<b>---</b>	<b>306514</b>

Source: GPS - Narwa Khinchiyan, Jodhpur

## E. Artificial Insemination Programme:

1. Strengthening of filed Artificial Insemination Network:- Major providers of Artificial insemination service in the state are under the state AHD, Dairy Co-operatives and NGO sectors. The status of A.I centres as on 31.03.2013 informed by the participating agencies is as follows.

**INSTITUTIONAL INFRASTRUCTURE FOR A.I. PROGRAMME IN RAJASTHAN (Table-9)**

S. No.	NAME OF DISTRICT	AHD (Functional AI Centres)	DAIRY		BAIF	Private AI Worker	PSK (Functional)
			Single	Cluster			
1	Ajmer	151	21	32	51	3	28
2	Bhilwara	192	0	0	52	0	31
3	Nagaur	109	0	0	0	2	60
4	Kuchaman city	125	0	0	0	1	30
5	Tonk	108	0	0	29	0	41
6	Bharatpur	191	0	0	5	0	60
7	Dholpur	52	0	0	0	2	17
8	Karoli	74	0	0	31	2	26
9	S.Madhopur	86	0	0	11	0	2
10	Bikaner	104	0	0	0	0	12
11	Churu	120	0	0	0	3	20
12	Hanumangarh	132	0	0	0	0	89
13	Sri Ganganagar	136	8	20	0	2	68
14	Jaipur	326	39	150	21	25	172
15	Alwar	172	23	50	28	2	138
16	Dausa	94	0	0	22	0	19
17	Jhunjhunu	218	0	0	0	2	135
18	Sikar	238	0	0	0	14	126
19	Jodhpur	181	0	29	0	0	0
20	Barmer	83	0	0	0	0	3
21	Jaisalmer	50	0	0	0	0	0
22	Jalore	102	0	0	0	0	7
23	Pali	134	0	1	0	4	0
24	Sirohi	69	0	0	13	0	2
25	Kota	82	0	0	0	0	0
26	Baran	88	0	0	14	0	0
27	Bundi	85	0	0	7	0	20
28	Jhalawar	81	0	0	16	0	0
29	Udaipur	207	0	0	32	0	7
30	Banswara	103	0	0	24	0	10
31	Chittorgarh	92	0	0	33	0	6
32	Dungarpur	140	0	0	6	3	16
33	Rajsamand	101	0	0	14	1	10
34	Pratapgarh	75	0	0	2	0	2
<b>TOTAL</b>		<b>4301</b>	<b>91</b>	<b>282</b>	<b>411</b>	<b>66</b>	<b>1157</b>



**Rajasthan Livestock Development Board - A.I. Report**  
**Annual Progress Report - 2013-14 (April-13 to March- 2014)**

SN	Name of District	Functional Centre	AI Targets	AI Done by AHD									Total AI in Cow	Surti	MB	Total AI in Buffalo	Total AI	AI Done by pvt.AI Worker & PSK	AI Grand Total (AHD+Pvt. AI Worker)
				HF	Jersy	Cross Bred	Thar	Gir	Rathi	Nagori	Kankrej	Others							
1	Ajmer	151	135000	19536	2023	14287	0	28788	0	0	0	0	64634	0	26819	26819	91453	83008	174461
2	Bhilwara	192	130000	13745	1880	10827	0	22716	0	0	0	0	49168	0	29043	29043	78211	5156	83367
3	Nagore	109	95000	11099	8506	3020	0	1928	1024	443	0	0	26020	0	23518	23518	49538	5305	54843
4	K.City	125	126000	34219	5843	0	0	1216	719	0	0	306	42303	0	29871	29871	72174	7543	79717
5	Tonk	108	60000	0	0	4292	0	10420	0	0	0	0	14712	0	12782	12782	27494	0	27494
6	Bharatpur	191	160000	0	0	53071	0	4334	0	0	0	0	57405	0	31906	31906	89311	9970	99281
7	Dholpur	52	53000	6540	9223	0	0	1082	0	0	0	0	16845	0	17435	17435	34280	6417	40697
8	Karauli	74	44000	1585	0	8003	0	0	0	0	0	0	9588	0	24983	24983	34571	973	35544
9	S.Madhopur	86	38000	0	0	8965	0	509	0	0	0	0	9474	0	14334	14334	23808	0	23808
10	Bikaner	104	75000	19743	12948	687	0	0	18037	0	0	0	51415	0	8000	8000	59415	2205	61620
11	Churu	120	71000	11894	7356	7197	0	0	3644	0	0	0	30091	0	14917	14917	45008	4470	49478
12	Hanumangarh	132	125000	17447	11218	8489	11	0	3774	0	0	0	40939	0	26020	26020	66959	0	66959
13	S.Ganganagar	136	150000	33896	16387	8299	2329	0	6480	0	0	1444	68835	0	22504	22504	91339	18880	110219
14	Jaipur	326	286000	0	0	102399	0	15275	4435	0	0	0	122109	0	105707	105707	227816	50143	277959
15	Alwar	172	200000	32512	18479	1507	0	0	1148	0	0	383	54029	0	71793	71793	125822	23223	149045
16	Dausa	94	84000	0	0	31586	0	0	0	0	0	0	31586	0	38107	38107	69693	0	69693
17	Jhunnjhunu	218	179000	22361	25612	41593	65	0	0	0	0	348	89979	0	43563	43563	133542	32977	166519
18	Sikar	238	284000	61654	7445	27794	1112	0	450	0	0	146	98601	0	83184	83184	181785	9681	191466
19	Jodhpur	181	136000	19158	0	16252	15252	0	0	0	0	0	50662	0	30121	30121	80783	0	80783
20	Barmer	83	36000	0	0	3976	2462	0	0	0	0	0	6438	0	7845	7845	14283	0	14283
21	Jaisalmer	50	11000	258	0	0	1596	0	0	0	0	0	1854	0	497	497	2351	0	2351
22	Jalore	102	78000	2476	0	56	0	0	0	0	0	4876	7408	0	27438	27438	34846	0	34846
23	Pali	134	93000	10605	1263	0	0	2894	0	0	0	776	15538	0	19249	19249	34787	600	35387
24	Sirohi	69	43000	2330	360	392	0	0	0	0	0	1576	4658	0	5899	5899	10557	0	10557
25	Kota	82	48000	4819	3778	1635	935	6752	0	0	0	0	17919	0	11990	11990	29909	0	29909
26	Baran	88	46500	5761	5506	110	0	6202	0	0	0	0	17579	0	9600	9600	27179	5165	32344

**Rajasthan Livestock Development Board - A.I. Report**  
**Annual Progress Report - 2013-14 (April-13 to March- 2014)**

SN	Name of District	Functional Centre	AI Targets	AI Done by AHD									Total AI in Cow	Surti	MB	Total AI in Buffalo	Total AI	AI Done by pvt.AI Worker & PSK	AI Grand Total (AHD+Pvt.A I Worker)
				HF	Jersey	Cross Bred	Thar	Gir	Rathi	Nagori	Kankrej	Others							
27	Bundi	85	56500	6465	2410	0	0	6871	0	0	0	0	15746	0	13554	13554	29300	2133	31433
28	Jhalawar	81	50000	3804	323	0	0	9974	0	0	0	0	14101	0	11199	11199	25300	0	25300
29	Udaipur	207	165000	24269	6053	12621	0	6398	0	0	0	0	49341	3169	35054	38223	87564	432	87996
30	Banswara	103	100000	1144	2000	10801	0	9387	0	0	0	0	23332	21001	25552	46553	69885	1179	71064
31	Chittorgarh	92	116000	5116	522	5567	0	12401	0	0	0	0	23606	8191	22599	30790	54396	0	54396
32	Dungarpur	140	70000	400	98	4615	0	4125	0	0	0	0	9238	8253	19951	28204	37442	659	38101
33	Rajsamand	101	104000	8498	6077	2322	0	9649	0	0	0	0	26546	1815	17428	19243	45789	5777	51566
34	Pratapgarh	75	52000	445	255	558	0	780	0	0	0	0	2078	282	928	1190	3268	228	3496
	<b>Total</b>	<b>4301</b>	<b>3500000</b>	<b>381779</b>	<b>155565</b>	<b>390961</b>	<b>23762</b>	<b>161701</b>	<b>39711</b>	<b>443</b>	<b>7228</b>	<b>2627</b>	<b>1163777</b>	<b>42691</b>	<b>883390</b>	<b>926081</b>	<b>2089858</b>	<b>276124</b>	<b>2365982</b>

**CALF BORN – 2012-13:** Breedwise Calf born informed by Animal Husbandry Deptt. Is depicted in following Table

**Rajasthan Livestock Development Board - A.I. Report**  
**Annual Progress Report - 2013-14 (April-13 to March- 2014)**

S. N.	Name of District	Calf Born									Calf born in Cow	Surti	MB	Calf born in Buffalo	Total Calf Born
		HF	Jersey	Cross Bred	Thar	Gir	Rathi	Nagori	Kankrej	Others					
1	Ajmer	0	0	11122	0	7891	0	0	0	0	19013	0	7972	7972	26985
2	Bhilwara	5550	618	3411	0	6343	0	0	0	0	15922	0	6410	6410	22332
3	Nagore	0	0	6513	0	0	0	1559	0	0	8072	0	7648	7648	15720
4	K.City	14095	2511	0	0	526	205	0	0	177	17514	0	13347	13347	30861
5	Tonk	0	0	1098	9	3292	0	0	0	6	4405	0	3516	3516	7921
6	Bharatpur	0	0	10841	0	1533	0	0	0	0	12374	0	11266	11266	23640
7	Dholpur	2251	2932	0	0	265	0	0	0	0	5448	0	5258	5258	10706
8	Karauli	0	0	2378	0	0	0	0	0	0	2378	0	6110	6110	8488

S. N.	Name of District	Calf Born									Calf born in Cow	Surti	MB	Calf born in Buffalo	Total Calf Born
		HF	Jersey	Cross Bred	Thar	Gir	Rathi	Nagori	Kankrej	Others					
9	S.Madhopur	0	0	2751	0	41	0	0	0	0	2792	0	3379	3379	6171
10	Bikaner	5072	3193	370	0	0	4205	0	0	0	12840	0	1729	1729	14569
11	Churu	5654	3977	1359	0	0	1061	0	0	0	12051	0	5784	5784	17835
12	Hanumangarh	7660	4420	4641	55	0	572	0	0	3	17351	0	11440	11440	28791
13	S.Ganganagar	10742	5593	4149	850	0	1903	0	0	124	23361	0	7175	7175	30536
14	Jaipur	0	0	51774	0	1515	461	0	0	0	53750	0	43459	43459	97209
15	Alwar	10620	5133	0	0	0	0	0	0	119	15872	0	19682	19682	35554
16	Dausa	0	0	7577	0	0	0	0	0	0	7577	0	8950	8950	16527
17	Jhunnjhunu	8618	6274	12644	0	0	0	0	0	57	27593	0	13719	13719	41312
18	Sikar	20680	1272	8485	0	0	0	0	0	15	30452	0	24160	24160	54612
19	Jodhpur	6496	0	4787	2734	0	0	0	0	0	14017	0	7770	7770	21787
20	Barmer	0	0	1326	549	0	0	0	0	0	1875	0	2195	2195	4070
21	Jaisalmer	81	0	0	318	0	0	0	0	0	399	0	139	139	538
22	Jalore	0	0	0	0	0	0	0	0	0	0	0	0	9337	9337
23	Pali	4095	364	0	0	942	0	0	293	293	5987	0	7336	7336	13323
24	Sirohi	479	64	82	0	0	0	0	503	503	1631	0	1426	1426	3057
25	Kota	0	0	0	0	0	0	0	0	3072	3072	0	1250	1250	4322
26	Baran	1092	1047	0	0	1220	0	0	0	0	3359	0	2012	2012	5371
27	Bundi	2237	977	0	0	2637	0	0	0	0	5851	0	3190	3190	9041
28	Jhalawar	1224	117	0	0	1551	0	0	0	0	2892	0	2051	2051	4943
29	Udaipur	8095	2038	3819	0	2061	15	0	0	0	16028	1561	10426	11987	28015
30	Banswara	320	594	2661	0	1731	0	0	0	0	5306	4335	4466	8801	14107
31	Chittorgarh	1366	141	1671	0	3351	0	0	0	0	6529	1502	4317	5819	12348
32	Dungarpur	426	0	475	0	1892	0	0	0	0	2793	3686	4068	7754	10547
33	Rajsamand	2366	1962	1318	0	2798	0	0	0	0	8444	941	4347	5288	13732
34	Pratapgarh	0	0	0	0	0	0	0	0	0	0	0	0	0	8114
	<b>Total</b>	<b>119219</b>	<b>43227</b>	<b>145252</b>	<b>4515</b>	<b>39589</b>	<b>8422</b>	<b>1559</b>	<b>796</b>	<b>4369</b>	<b>366948</b>	<b>12025</b>	<b>255997</b>	<b>277359</b>	<b>652421</b>

**Total AI Done by different agencies****(Table-12)**

AGENCY	TOTAL AI CENTRES	A.I. DONE DURING 2013-14			CALF BORN		
		COWS	BUFFALO	TOTAL	Cow	Buff.	Total
AHD	4301	1163777	926081	<b>2089858</b>	366152	268022	634174
PASHUDHAN SEVA KENDRA	1128	<b>Total Done AI By psk/Pvt. 276124</b>					
PRIVATE AI WORKERS	66						
MILK UNIONS	373	185880	115148	<b>301028</b>	-	-	-
BAIF	411	220118	248149	<b>468267</b>	49016	41552	90568
HITESH SANSTHAN BHARATPUR	116	25372	22215	<b>47587</b>	8886	7228	16114
URMIDWAR BHARATPUR	280	24260	15678	<b>39938</b>	1577	2108	3685
<b>TOTAL</b>	<b>6675</b>	<b>1619407</b>	<b>1327271</b>	<b>3222802</b>	<b>425631</b>	<b>318910</b>	<b>744541</b>

**2. Conversion of Stationary A.I. centre in to Mobile centre:** The AH department is having 4301 centres in the state. Portable A.I. Jars are being provided regularly to strengthen the "Artificial Insemination Network" in terms of converting the A.I. centre from static to mobile, non functional to functional, opening of new A.I. centre ,mobile units and replacement of old and damaged cryo containers under various schemes. A total of 1632 cryo containers have been provided to the Department of Animal Husbandry for conversion of stationary AI center in to mobile and non-functional to functional center under the NPCBB Phase-II . An amount of Rs 100.00 lacs has been utilized since inception of NPCBB-II to till the year of 2013-14. An amount of 109.33 lacs has been utilized under NRAA, CMMVU, RKVY-NMPS in 2013-14.

**STATISTICS OF AI CENTRE OF AH DEPT.:****(Table-13)**

S. N.	Name of District	Static Centres	Mobile Centres	Feeding Centres	LN Distri. Routes	Centres not doing AI			
						Total	Lack of Instruments	Lack of Staff	Other causes
1	<b>Ajmer</b>	3	148	11	7	9	5	4	0
2	Bhilwara	0	192	75	9	30	15	10	5
3	Nagore	0	109	12	4	16	14	2	0
4	K.City	0	125	6	6	36	0	15	21
5	Tonk	1	107	9	4	14	0	14	0
6	<b>Bharatpur</b>	0	191	16	5	1	0	1	0
7	Dholpur	0	52	10	5	13	0	7	6
8	Karauli	0	74	9	9	11	0	11	0
9	S.Madhapur	0	86	6	4	7	0	7	0
10	<b>Bikaner</b>	9	95	15	3	53	5	48	0
11	Churu	0	120	7	1	13	0	13	0
12	Hanumangarh	0	132	11	3	9	0	8	1

S. N.	Name of District	Static Centres	Mobile Centres	Feeding Centres	LN Distri. Routes	Centres not doing AI			
						Total	Lack of Instruments	Lack of Staff	Other causes
13	S.Ganganagar	0	136	22	3	15	0	14	1
14	<b>Jaipur</b>	0	326	35	7	6	0	6	0
15	Alwar	10	162	0	6	23	16	1	6
16	Dausa	0	94	0	3	15	0	15	0
17	Jhunjunu	0	218	15	5	10	0	10	0
18	Sikar	0	238	17	7	16	0	16	0
19	<b>Jodhpur</b>	0	181	21	10	5	0	5	0
20	Barmer	0	83	6	5	86	0	29	57
21	Jaisalmer	0	50	0	0	15	0	2	13
22	Jalore	0	102	0	3	14	0	14	0
23	Pali	1	133	29	3	20	188	2	0
24	Sirohi	1	68	19	4	19	0	14	5
25	<b>Kota</b>	0	82	12	3	1	0	1	0
26	Baran	2	86	13	3	5	0	5	0
27	Bundi	0	85	0	0	1	0	1	0
28	Jhalawar	0	81	15	3	6	0	6	0
29	<b>Udaipur</b>	0	207	14	4	54	25	21	8
30	Banswara	11	92	5	5	26	0	0	26
31	Chittorgarh	0	92	11	3	58	0	51	7
32	Dungarpur	0	140	5	3	3	0	3	3
33	Rajsamand	0	101	8	4	22	0	22	0
34	Pratapgarh	3	72	0	0	6	0	0	6
	<b>Total</b>	<b>41</b>	<b>4260</b>	<b>434</b>	<b>144</b>	<b>638</b>	<b>98</b>	<b>378</b>	<b>162</b>

## F. Production of Quality Bull

The mandate of the “NATIONAL PROJECT FOR CATTLE AND BUFFALO BREEDING” (NPCBB) aims at provision of quality breeding services to the available breedable cattle and buffaloes in the state. Selection and Distribution of elite bulls for provisions of Breeding Service is therefore a matter of great concern. Limitation in availability of pedigreed / quality bulls for Artificial insemination and natural service is a major practical constraint affecting adversely in achieving the desired goals.

A large number of the bovine females are being bred through Natural service in the field by the locally available bulls. Indiscriminate breeding by scrub bulls is quite existent since availability of elite bulls is a major constraint. Rearing the male calves to produce bulls for breeding is not a commonly acceptable proposition to the farmers. The livestock owners are disinclined to rear the male off-springs (for economic reasons) resulting in loss of the elite germ plasm.

The endeavors of RLDB therefore in identification and availability of elite bulls to be distributed for Artificial Insemination and Natural Service are being attempted by way of:

**1. Progeny Testing Programme:** Genetic improvement of bovines in the State can play a pivotal role and continuing the specific programmes like field progeny testing programme (FPTP) with definite goals and strategies may help immensely to increase the productivity and milk production in Rajasthan. The state had submitted the project proposals for Progeny Testing Programme in Rathi & Tharparkar Bull to GOI for an allocation of Rs. 500.00 lacs to Rajasthan Livestock Development Board in Phase-II (2007–12) of National Project for Cattle and Buffalo Breeding. After appraisal of the project plan, the Project Sanctioning Committee (PSC) under the chairmanship of Secretary (AD&F) on 17.3.2008 decided to appraise this activity with an allocation of Rs 400.00 lakh for five years (i.e. 2007-2012). Out of this an amount of Rs 200.00 lakh is assessed for Rathi.

The preliminaries required for setting up of the Progeny testing programme constitutes a well conceived Field Milk recording programme associated with availability of a semen production station. The Field Progeny Testing Programme for Rathi breed of cattle in association with RCDF was initiated. URMUL Dairy and URMUL Trust have identified 20 elite male calves of Rathi breed of cattle through the Milk Recording scheme. Considering their conformity to the specific breed characters for the breed and production record of their dams, 20 of the elitist calves have been procured for the Progeny Testing programme in the year of 2008-09.. The male calves identified have been procured and reared till maturity at the Exotic Nucleus Farms, Bassi. The Progeny Testing programme unit bulls have been transferred at the FSB Bassi for their periodic semen collection, freezing, distribution and storage. FSB Bassi has so far purchased 20 Rathi bulls from the funds allotted by RLDB under the head of Strengthening of Bull Mother Farm at a cost of Rs 3.1105 Lakh. An amount of Rs 18.64 lakh was allotted by RLDB for up gradation of equipments under the head of PTP.

- 20 Rathi bulls was procured by FSB Bassi for Genetic evaluation
- Out of 20 Rathi bulls 10 bulls have been put to test since 2011-12,
- 50 villages of Bikaner District have been selected for PT programme.
- The AI programme for Rathi PTP was started in August 2011 through NGO (J.K. Trust)
- 3000 doses per bull have been stored at FSB Bassi till the PT results
- J.K. Trust has stopped the AI programme since Jan. 2012.

**2. Implementing ONBS with MOET:** Open Nucleus Breeding System (ONBS) is a breeding system in which animals may be transferred between levels in both directions. The nucleus remains open to introduction of new genes from outside and hence; the system is termed as "Open Nucleus Breeding System" (ONBS). Often the base is managed for multiplier / commercial production and the nucleus to breed superior sires. The Open Nucleus Breeding System offers the advantage of testing bulls under controlled farm conditions. Under ONBS sires and dams are evaluated on the basis of their sib

performance and not on their progeny programme. Such evaluations accelerate genetic gain as the generation interval goes down.

After appraisal of the project plan, the Project Sanctioning Committee (PSC) under the chairmanship of Secretary (AD&F) on 17.3.2008 decided to appraise this activity with an allocation of Rs 260.00 lakh for five years (i.e. 2007-2012). Out of this, an amount of Rs 205.00 lakh was allotted to the CVAS for this scheme. A nucleus herd was established with 75 breedable females of Rathi breed at the ONBS farm. The scheme also envisages to incorporating Multiple Ovulation & Embryo transfer Technology (MOET) for a rapid multiplication of the elite germ-plasm.

### 3. Milk Recording Scheme:-

Performance recording of animals under field conditions greatly helps in selecting animals of high genetic merit to be used for breeding purposes. The programme of milk recording on the guidelines of CHRS will be re-started from the 2nd year of NPCBB phase-II. An amount of 108.89 was utilized under the head of milk recording scheme.

**Breeds and districts proposed for recording:** Four breeds of cattle viz. Tharparkar, Gir, Rathi and Kankrej and Murrah breed for buffalo shall be taken up for recording in the districts lying in the breeding tracts of these breeds as follows: (Table-14)

S. No	Breed to be recorded	*Minimum Production Standard Lactation Yield in Kg			Districts	Villages / Centres to be selected
		Cat. - C	Cat. - B	Cat. - A		
1	Tharparkar	2000-2599	2600-2999	3000 & more	Jaisalmer, Barmer and Jodhpur	25
2	Gir	2000-2599	2600-2999	3000 & more	Ajmer, Bhilwara and Tonk	20
3	Rathi	2000-2599	2600-2999	3000 & more	Bikaner and Sri Ganganagar	20
4	Kankrej	1700-2399	2400-2699	2700 & more	Jalore, Pali and Sirohi	20
5	Murrah	2200-2699	2700-3199	3200 & more	Alwar, Bharatpur, Bundi and Jhunjhnu	34

**\*Minimum Production Standard – Standards defined under the Central Herd Registration scheme (CHRS) of GOI.**

**By the end of March, 2014 out of 119 centres, 48 centres were recording 340 animals for the performance.** (Table-15)

S. No.	District	Breed	No. of MR centres sanctioned	No. of MR centres functional	No. of animals under recording
1.	Jaisalmer	Tharparkar	10	9	33
2.	Barmer		10	2	11
3.	Jodhpur		5	0	0
4.	Ajmer	Gir	8	4	50
5.	Bhilwara		6	3	12
6.	Tonk		6	0	0
7.	Bikaner	Rathi	17	0	0
8.	Sriganganagar		3	0	0
9.	Jalore	Kankrej	10	13	92

S. No.	District	Breed	No. of MR centres sanctioned	No. of MR centres functional	No. of animals under recording
10.	Pali	Murrah	5	0	0
11.	Sirohi		5	0	0
12.	Alwar		13	13	142
13.	Bharatpur		12	0	0
14.	Jhunjhunu		5	0	0
15.	Bundi		4	4	0
<b>TOTAL</b>			<b>119</b>	<b>48</b>	<b>340</b>

#### **4. Rearing of male Calves at Calf Rearing Station:-**

Under the Calf Rearing Scheme, elite calves are procured from the field (preferably from the Milk Recording Scheme areas) at a young age and reared to maturity at RLDB approved Caf Rearing Stations adopting appropriate scientific feeding and managerial skills. The bulls so developed are later distributed in the field to Panchayat Raj institutions, progressive farmers, Gaushalas etc for providing natural service.

#### **PROGRESS OF CALF REARING SCHEME**

(Table-16)

S. No	CALF REARING FARM	BREED	2013-14	
			Reared	Distributed
1	Kumher	MB	65	85
2	Ramsar	Gir	02	01
3	Nagaur	MB	39	41
<b>TOTAL</b>			<b>106</b>	<b>127</b>

\* This includes DAH funds also

#### **5. Rearing of Male Calves at farmer's Doorstep:-**

Calf Rearing at farmer's doorstep is an important scheme under National Project for Cattle & Buffalo Breeding with the objective to make available sufficient number of good quality breeding bulls for natural service.

Under the scheme RLDB is providing financial help for rearing the male calves of Gir, Rathi, Tharparkar & Kankraj Breed in the breeding tract of these breeds up to the age of 24 months in four installments.

The calves of good phenotypical quality mothers are selected at weaning stage (One month to six month) on the basis of assessment of their mother's milk production as assessed in CHRS Scheme/Milk Union/University/Breeder's Association records or on the basis of Testday milking record by the committee constituted as per scheme norms. The financial assistance providing for rearing the calves is as under:-

First installment	(at the time of selection) –	Rs. 2000
Second installment	(at the age of 12 months)-	Rs 3000
Third installment	(at the age of 18 months) -	Rs.2000
Fourth installment	(at the age of 24 months)-	Rs.3000
Total		- Rs.10000



## G. Bull Distribution for Natural Service:-

Under Acquisition of bulls for Natural Service, during the year of 2013-14 district wise progress of procurement of bulls for natural service is as follows:- (Table-18)

Sr.No.	Name of District	No. of Bull Sanctioned	Distributed
1	Kuchaman City	1	1
2	Bharatpur	82	82
	<b>Total</b>	<b>83</b>	<b>83</b>
3	Milk Union Bhilwara	10	10
4	Milk Union Ajmer	10	10
5	Milk Union Pali	15	15
6	Milk Union Kota	20	20
7	Lupin Human welfare & RF, Bharatpur	11	11
	Total	66	66
	Grand Total	149	149

## H. Manpower Development

### Training of AI Workers

RLDB has imparted 5-days refresher A.I trainings to the technical employees & officers of the participating agencies of AHD & 6 day training to Private A.I. workers during 2013-14 detailed as below:-

### **Progress of Training Year 2013-14**

(Private A.I. Worker & Existing A.I. worker & New V.O./L.S.A. A.I. fees) (Table-19)

S. No	Name of Training Institute	No. of Trainees		
		Private A.I. Worker(P.S.K) (NPCBB-II funds)	Existing A.I. worker (NPCBB-II funds)	New V.O./L.S.A. (A.I Fees fund)
1	RSLMTI	167	201	159
2	Bassi	89	-	-
3	Kota	40	-	-
4	Jodhpur	22	-	-
5	Udaipur	41	-	-
	<b>TOTAL</b>	<b>359</b>	<b>201</b>	<b>159</b>

### **Training of Professionals (Out State)**

1. 10 Professionals were sent for training on "Fertility Problems in Bovine Females" at KLDB Training Center Mattupatti during Year 2013-14.
2. 9 Professionals were sent for training on "Management of Infertility Problems and Field A.I. Programme" at CFSP&TI, Hesseraghatta Bangluru during Year 2013-14.

## **I. National Mission for Protein Supplement (NMPS)**

### **Guidelines of the sub-scheme Special Programme for Dairy Development as a part of National Mission for Protein Supplements under Rashtriya Krishi Vikas Yojana (RKVY)**

National Mission for Protein Supplements (NMPS) will be implemented in identified States during financial year 2012-13 under Rashtriya Krishi Vikas Yojana (RKVY), at an outlay of Rs.500.00 (Rupees Five Hundred Crore only) of which, Rs.200.00 Crore (Rupees Two Hundred Crore only) has been earmarked to the sub-scheme for dairy development named as Special Programme for Dairy Development under National Mission for Protein Supplements (SPDD-NMPS). Under the scheme projects will be funded for expansion of animal husbandry and dairy development activities with priority given to improving productivity of milch animals through measures such as productivity improvement programme, improving nutritional balance of animal feed concentrate, fodder development activity and improving milk procurement, processing and marketing infrastructure in the indentified area of implementation.

#### **Basic Features of the Special Programme for Dairy Development (SPDD)**

The SPDD aims at ensuring nutritional balance for consumers in terms of milk protein intake, growth in milk production and holistic development of Animal Husbandry and Dairy sector.

The main objectives of the scheme are to:

- (i) Increase milk production in the country.
- (ii) Ensure balancing of milk protein intake requirement and availability for the consumers.
- (iii) Incentivize the states so as to increase public investment in Animal Husbandry and Dairy sector.
- (iv) Provide flexibility and autonomy to states in the process of planning and executing projects for development of Animal Husbandry and Dairy sector.
- (v) Ensure that the local needs/priorities are better addressed by the projects taken up by the respective state governments themselves.
- (vi) Achieve the goal of reducing the yield gaps in milk production, through focused interventions.
- (vii) Maximize returns to the milk producers/farmers in Animal Husbandry and Dairy sector.
- (viii) Bring about quantifiable changes in the production and productivity in Animal Husbandry and Dairy sector by addressing them in a holistic manner

#### **Scheme Implementation And its Components**

Financial assistance in the form of yearly allocation shall be released to the State Governments for any/all of, but not limited to, the following components under the scheme:

<b>S.No.</b>	<b>Components</b>
1.	Strengthening of dairy units by induction of upto 100 cross bred cows/indigenous descript milch cows like Sahiwal, Red Sindhi, Gir, Rathi etc/graded buffaloes
2.	Rearing of Heifer calves- Crossbred, indigenous descript milk breeds of cattle and graded buffaloes (up to 50 animals)
3.	Construction/renovation of cattle-sheds for housing of milch animals
4.	Purchase/installation of milking machine, milk-o-tester, bulk milk cooling units
5.	Establishment/modernization/augmentation of processing capacity of dairy plants
6.	Purchase of equipments for Fodder cultivation, harvesting, silage making, fodder block making unit, feed mixing and grinding facilities, and for manufacturing feed and feed supplements.

The State Government Departments, State Government owned Undertaking/Board/Authorities would be given 100 % grant for undertaking the above mentioned activities. The projects implemented through Dairy/Milk Cooperative Societies would be on 75:25 cost sharing basis between Central grant and Implementing agency's share. In case of the project being implemented by a progressive dairy farmer the assistance from the scheme should be limited to 25% of the project cost.

**Funding pattern shall continue to be on 50:50 cost sharing basis for the project components, which have already been approved under the scheme during 2011-12 and which are implemented through Dairy/Milk Cooperative Societies.**

**(NMPS) National mission for Protein Supplement**

<b>1.</b>	Total Fund Received in 2013-14	41677000
<b>2.</b>	Total Fund Left in 2012-13	12,5406696
<b>3.</b>	Total Available Fund	167083696

**NMPS EXPENSES**

Group Summary  
1-Apr-2013 to 31-Mar-2014

**(Rs. in lakh.)**

<b>S.No.</b>	<b>Particulars</b>	<b>Amount</b>
1	Advertisement	3.92
2	Civil Work	45.52
3	Cow Purchase	6.25
4	Feed & Fodder	17.97
5	Health Care	0.04
6	Misc	3.09
7	Goat Purchase	32.46
8	LN2 Transport Storage Jars	21.22
9	New Sub Centers	36.00
<b>Grand Total</b>		<b>166.47</b>

**J. Miscellaneous:-**

**1. Fertility Camps:**

In Rajasthan Infertility in the animals is the main cause of low conception rates. Hence, to increase the coverage of breedable females, periodic organization of fertility camps in the districts is an essential component of livestock development. Under the project activities RLDB had provided funds for 560 fertility camps in the year 2013-14, which are organized in the year 2014-15.

**2. State Level Cattle Fairs**

The heritage of Rajasthan and its cultural diversities is well projected in ten state level fairs conducted by the state Animal Husbandry department. These fairs are conducted with an aim to draw their attention to the scientific and technical developments in the Animal Husbandry sector and to motivate them for developing and rearing elite animals. These fairs are an appropriate source for sale and purchase of livestock adding to the income of livestock owners / breeders. The variety and breeds of animals presented, depict a fair evaluation of the progress of livestock development in the state.

The list of state level cattle fairs is as follows:

(Table-21)

S.No	NAME OF THE CATTLE FAIR	DISTRICT	MONTH OF CONDUCTION	AS PER HINDI TITHI
1	Shri Ram Dev Pashu Mela	Nagaur	January – February	Magha Shukla 1 to Magha Shukla 15
2	Shri Mahashivratri Pashu Mela	Karauli	February	Phalgun Krishna 7 to Phalgun Krishna 14
3	Shri Malli Nath Pashu Mela, Tilwada	Barmer	March – April	Chaitra Krishan 11 to Chaitra Shukla 11
4	Shri Baldev Pashu Mela, Merdta City	Nagore	March – April	Chaitra Shukla 1 to Chaitra Shukla 15
5	Shri Gomti Sagar Pashu Mela, Jhalrapattan	Jhalawar	May	Baisakh Shukla 13 to Jyaistha Krishna 5
6	Shri Veer Tejaji Pashu Mela, Parbatsar	Kuchaman City	August	Savan Shukla 15 to Bhadra krishna 15
7	Shri Gogamedi Pashu Mela	Hanumangarh	August – September	Savan Shukla 15 to Bhadon Shukla 15
8	Shri Jaswant Pradarshni & Pashu Mela	Bharatpur	September – October	Ashwin Shukla 5 to Ashwin Shukla 14.
9	Shri Kartik Pashu Mela, Pushkar	Ajmer	November	Kartik Shukla 8 to Mangsir Krishna 2
10	Shri Chandrabhaga Pashu Mela, Jhalarapatan	Jhalawar	November - December	Kartik Shukla 11 to Mangsir Krishna 5

The state government has directed to deposit the revenue earned from these fairs with RLDB. RLDB provides these funds to be utilized for the infrastructural strengthening and development of permanent nature at fair ground / premises. In special cases with due permission amount is being allotted for other essential matters. As per government order dated 07.12.09, RLDB provides following amount for giving prizes in different categories:

(Table-22)

S. No.	Categories	1 <sup>st</sup> Prize	2 <sup>nd</sup> Prize	3 <sup>rd</sup> Prize	Consolation prize
1	Bullock 4-6 Teeth	2100	1100	500	250
2	Bullock 2-4 Teeth	2100	1100	500	250
3	Bullock Adant (no Teeth)	1100	500	300	150
4	Cow Bull	2100	1100	500	250
5	Cow (Dry)	1100	500	300	150
6	Cow Bull Calf	1100	500	300	150
7	Cow (milch)	2100	1100	500	250
8	Horse Bull	2100	1100	500	250
9	Mare (Breedable)	2100	1100	500	250
10	Colt	1100	500	300	150
11	Camel (Riding)	2100	1100	500	250
12	Camel (Femal)	2100	1100	500	250
13	Camel (Bull)	2100	1100	500	250
14	Buffalo Bull	2100	1100	500	250
15	Buffalo	2100	1100	500	250
16	Cross Bred Bull	2100	1100	500	250
17	Cross Bred Cow	2100	1100	500	250
18	Cross Bred Cow (Hiefer)	2100	1100	500	250

The progress of revenue received and distributed for development of the fairs is as follows:

## Cattle Fair 2013-14

(Table-23)

S.No.	Name of the Cattle Fair	Amount Credited in RLDB A/c 2013-14	Amount Given for the Cattle Fair 2013-14
1	Shri Ram Dev Pashu Mela, Nagaur	729090	126650
2	Shri Mahashivratri Pashu Mela, Karuali	495461	21800
3	Shri Malli Nath Pashu Mela, Tilwada, Barmer	1071200	196750
4	Shri Baldev Pashu Mela, Merdta City, Nagaur	372852	51650
5	Shri Gomti Sagar Pashu Mela, Jhalrapatan	0	0
6	Shri Veer Tejaji Pashu Mela, Parbatsar, Nagaur	408561	0
7	Shri Gogamedi Pashu Mela, Hanumangarh	110509	18750
8	Shri Jaswant Pradarshni & Pashu Mela, Bharatpur	3106443	1593000
9	Shri Kartik Pashu Mela, Pushkar, Ajmer	279565	308000
10	Shri Chandrabhaga Pashu Mela, Jhalrapatan, Jhalawar	1758465	633500
		<b>8332146</b>	<b>2950100</b>

### Progress of Rajkiya Anudanit Insurance Scheme :-

Rajakiya Anudanit Bima Yojana Progress Report 2013-14 (March 2014)

(table-24)

dz-la-	Name of District	Kamdhenu Bima	Buffalo Insurance	Anudan Rashi in Rs.	Gaurakshak Bima		Total Anudan Rashi
					Insurance	Anudan Rashi	
1	Bundi	79	18	30949	0	0	<b>30949</b>
2	Baran	15	12	7088	0	0	<b>7088</b>
3	Dholpur	9	0	4253	0	0	<b>4253</b>
4	Hanumangarh	3	3	2363	0	0	<b>2363</b>
5	Karauli	0	0	0	0	0	<b>0</b>
6	Jalore	0	0	0	0	0	<b>0</b>
7	Pali	0	0	0	0	0	<b>0</b>
8	Sirohi	0	0	0	0	0	<b>0</b>
9	Rajsamand	3	0	1418	0	0	<b>1418</b>
10	S. Madhopur	0	0	0	0	0	<b>0</b>
11	Kota	0	0	0	562	11200	<b>11200</b>
12	Bhilwara	0	0	0	64	1280	<b>1280</b>
13	Dausa	30	47	28281	555	11100	<b>39381</b>
14	Bharatpur	0	0	0	75	1500	<b>1500</b>
15	Churu	0	0	0	84	1680	<b>1680</b>
16	Jaipur	0	0	0	217	4340	<b>4340</b>
17	Chittorgarh	0	0	0	0	0	<b>0</b>
18	Tonk	0	0	0	0	0	<b>0</b>
19	Sikar	0	0	0	221	4420	<b>4420</b>
20	Jhunjhunu	0	0	0	0	0	<b>0</b>
21	Alwar	0	0	0	45	510	<b>510</b>
	<b>Total</b>	<b>139</b>	<b>80</b>	<b>74352</b>	<b>1823</b>	<b>36030</b>	<b>110382</b>

### **3. “DUGDH AKSHAY” Livestock Insurance Scheme (Centrally Sponsored Scheme of GOI)**

#### **(i) Introduction:**

Animal Husbandry in Rajasthan is not a mere adjunct or subsidiary to agriculture; rather it is developing as a major economic activity, thus providing the much-intended insurance against prominently occurring scarcity conditions next to crop production.

This sector has also highest potential for rural self-employment generation at the lowest possible investment per unit. Development of livestock sector therefore is critical pathway to rural prosperity.

As such, it has become essential that suitable programmes are initiated to promote measures which ensure adequate compensation to the livestock owner in the eventuality of un-proclaimed loss of his valuable livestock.

Government of India vide it's D.O. No. 26-106/2005-AHS. Vol. III dated 27.1.2006, had informed the inclusion of Livestock Insurance in it's Common Minimum Programme.

In furtherance to it, GOI had conveyed the administrative approval for implementing a new **CENTRALLY SPONSORED SCHEME for LIVESTOCK INSURANCE** on pilot basis vide letter No. F.No. 26/106(1)/2006-LI-AHS dated 16<sup>th</sup> March, 2006. to be implemented through Rajasthan Livestock Development Board (RLDB) in the state.

#### **(ii) Objective:**

To promote a mechanism of assured protection to the farmers and cattle breeders against eventual losses of their elite animals.

#### **(ii) Salient Features of the Livestock insurance Scheme:**

The salient features of the scheme are as follows:

1. Government of India has accorded one of the top priorities of item of work and included in the Common Minimum Program of the Government.
2. The scheme was implemented during 2005-06, 2006-07, 2007-08 & 2008-9 in 100 districts on Pilot basis, which has been extended to the 300 selected districts of the country with effect from Dec. 2009.
3. Envisages insurance of the milch cross-bred, Indigenous cattle and buffaloes at their present market value against their death.
4. Envisages 50% subsidy on the cost of premium with entire cost of subsidy to be borne by the Central Government.
5. Provides subsidy for maximum two animals per family.

6. Provides scope for participation of private sector insurers also to get competitive premium rates and services.
7. Execution of the scheme through State Livestock Development Boards to facilitate easy flow of funds.
8. Provision for payment of honorarium to the Veterinary practitioners at the rate of Rs. 50/- per insured animal at the time of insurance and at the rate of Rs. 100/- per claim at the time of disposal of claim made by the beneficiaries for their services under the scheme.
9. Involves the role of Insurance agents and provision of payment of commission to the agents by the Insurance Companies.
10. Publicity provisions for creation of awareness among the public as well as among the officials engaged, but from Dec.2009 it has become the responsibility of insurance companies to make the expenditures on publicity.
11. Involvement of Panchayati Raj bodies (Gram Panchayats) for assisting the insurance companies for identification of beneficiaries, and for awareness creation, publicity and promotion of the scheme.

#### **(iv) Districts Selected by Government of India:**

During the year 2006-07, the scheme was implemented on pilot basis in six districts viz.: **Jaipur, Alwar, Bharatpur, Udaipur, Sikar & Jhunjhunu.**

From the year 2008-09 upto remaining period of 11<sup>th</sup> five year plan, another six districts viz.: **were selected under the scheme**, In furtherance to it, GOI conveyed the administrative approval for extension of the coverage of scheme to the 22 districts from six districts vide letter no. 26-106/2009-LIS(EFC-II th Plan –AHS dated 10-12-2009. The districts in which the scheme is being implemented are - **Jaipur, Alwar, Bharatpur, Udaipur, Sikar , Jhunjhunu, Churu, Ajmer, Dungarpur, Banswara, Pratapgarh, Jaisalmer, Barmer, Tonk, Kota, Jhalawar Nagour, Bikaner, Sriganganagar, Chittorgarh, Bhilwara and Jodhpur .**

#### **(v) Salient Execution Directives of GOI:**

1. C.E.O, Rajasthan Livestock Development Board (RLDB) shall be the Executive authority of the scheme.
2. The funds received from Government of India for premium subsidy, payment of honorarium to the Veterinary practitioners and publicity shall be placed with RLDB.
3. The State Government shall ensure availability of sufficient infrastructure in terms of manpower and other logistic support for effective implementation of the scheme to RLDB.
4. The Deputy Directors of AHD, also the designated Nodal officers of RLDB shall be the incharge of the scheme in the districts.

5. The Veterinary Doctors (SVO / VO) posted in the Govt. Veterinary Hospitals in the districts included in the scheme shall be associated for the insurance work in the districts who shall be eligible for due Honorariums.
6. The interested Dairy Cooperative societies may also contribute in identification of eligible beneficiaries and animals.
7. All female milch cattle and buffaloes (Crossbred as well as indigenous) are eligible for insurance benefit under the scheme as per terms and conditions outlined in the guidelines.
8. The insurance cover shall be executed by suitable Insurance Company (companies) selected on the basis of quotations received in writing taking into account the Premium rates offered, their capacity to provide services, terms and conditions and service efficiency.
9. The Insurance functionaries appointed by the approved Insurance agency for the district shall be actively engaged in selection of beneficiaries, conduction of insurance and settlement of claims and shall be eligible for commission from the Insurance agency.

10. Premium Rates & Service Tax:

The rates of premium under the scheme is as follows on the value of the animal assessed as mentioned in the health certificate:

- i. One year policy - 4.00 % gross of the sum insured (with PTD)
- ii. Three year policy - 9.20 % gross of the sum insured (with PTD)
- iii. Service Tax Extra - As applicable from time to time

Service Tax shall not be born by RLDB

11. Honorarium To Veterinary Practitioners:

The Veterinary Practitioner shall be entitled to be paid for animals included in the scheme as follows:

- i. Health Certificate - Rs 50/- per animal insured
- ii. PM conduction and PM certificate - Rs. 100/- per animal

**(vi) Physical Progress:**

**Progress report of Physical Achievements for the Centrally Sponsored Livestock Insurance Scheme (2013-14) (Table-24)**

S. No.	Name of the District	Name of Insurance Company	Achievement				Number of beneficiaries up to the month
			No. of animal insured				
			Crossbred Cattle	Indigenous cattle	Buffaloes	Total	
1	Jaipur	United India	1965	384	2301	<b>4650</b>	2834
2	Bhilwara		556	0	282	<b>838</b>	838
3	Bharatpur		19	6	205	<b>230</b>	230
4	Tonk		348	25	685	<b>1058</b>	832
5	Churu		99	9	29	<b>137</b>	136
6	Udaipur		28	3	46	<b>77</b>	58
7	Banswara		65	0	104	<b>169</b>	169
8	Dungarpur		43	0	107	<b>150</b>	150
9	Pratapgarh		4	25	71	<b>100</b>	79



S. No.	Name of the District	Name of Insurance Company	Achievement				Number of beneficiaries up to the month
			No. of animal insured				
			Crossbred Cattle	Indigenous cattle	Buffaloes	Total	
10	Chittoragarh	United India	50	5	101	156	150
11	Ajmer		9	3	52	64	64
12	Nagour		1	0	3	4	4
13	Bikaner		136	188	23	347	240
14	Sriganganagar		0	0	0	0	0
15	Jodhpur		106	0	0	106	106
16	Jaisalmer		132	0	8	140	88
17	Barmer		0	0	0	0	0
18	Sikar		4	1	370	375	3
19	Jhunjhunu		173	480	320	973	876
20	Alwar		22	4	149	175	167
21	Kota		232	225	287	744	744
22	Jhalawar		25	16	41	82	82
23	<b>Total</b>			<b>4017</b>	<b>1374</b>	<b>5184</b>	<b>10575</b>

Note:- Out of 10575,251 Insurance was done by Iffco-Tokio company

## K. Other Activities

### 1. Sheep & Wool Improvement Scheme (SWIS) during 11<sup>th</sup> Plan

Central Wool Development Board, Jodhpur has sanctioned the project proposals worth Rs. 106.00 Lac for three years for implementation of SWIS for 2.00 lacs sheep at 1.00 lac sheep of Balesar & Osian blocks of Jodhpur and 1.00 lacs sheep of Merta, Nagour & Ladnoo blocks of Nagour district.

During the Year 2013-14 sum of Rs. 132.20 lacs was released for survey and study, registration of blocks, health care of sheeps, purchase of stud rams for breed improvement and for opening / strengthening of multi purpose extension centers. RLDB has utilized an amount of Rs. 108.43 lacs up to 31.03.14 Under integrated wool and development programme, balance amount of Rs. 23.76 lacs, will be utilized in Next years during the year 2013-14, Sum of 24.00 lacs was released for Insurance, RLDB has utilized, an amount of Rs. NIL upto 31.03.14.

(Table-25)

S.N.	Components	Targets		Aceivements	
		Physical	Financial (Lacs)	Physical	Financial (Lacs)
1	Support for Implementation	-	1.00	-	0.88
a.	Training Camp	10 camps	1.00	10	1.00
b.	Overhead expenditure for implementation of scheme	-	3.00	-	1.11
2	Health care of selected sheep	-	4.60	-	4.29
<b>Total</b>		10	9.60	10	7.28

**Physical achievement :-****(Table-26)**

S.No	Activity	2010-11	2011-12	2012-13	2013-14	Total no. of Sheep
1	Dosing (no. of Sheep)	11100	441305	272902	17284	<b>742591</b>
2	Dusting (no. of Sheep)	2305	245349	181434	11145	<b>440233</b>
3	Vaccination (no. of Sheep)	700	286778	204781	162265	<b>654524</b>
4	Treatment (no. of Sheep)	1803	122760	89127	1821	<b>215511</b>
5	Distribution of Ram	0	228	0	0	<b>228</b>

**(Source :- Joint Director AH Jodhpur and Nagaur)****2. Pilot Study on “Livestock centric Intervantion for Livelihood Improvement in Nagour District in Rajasthan Correctit” :-**

National Rainfed Area Authority, Ministry of Agriculture, GOI has sanctioned the project amounting to Rs. 393.81 Lac (357.04 + tax 10.3% i.e. 36.77 = 393.81). The objective of the project is to improve livestock production system in arid region and thereby improve livelihood of the farmers.

The pilot project is being implemented in consortia mode involving RLDB, CAZRI-Jodhpur and NGO-Gramin Vikas Trust-Noida. The project area is Nagour District of Rajasthan in which a cluster approach is followed i.e. 4 clusters with 3 villages in each cluster with an average size of 1000 household would be selected.

The development programme of these livestock includes identification, health coverage, breeding (AI, Buck/Ram distribution), castration, insurance, fertility camp organization, value addition (establishment of Bulk Milk Coolers, Automatic Milk Collection Units, Equipments to SHGs) and monitoring programmes.

**Financial Outlay:****(Rs. In Lac)****(Table-27)**

1 <sup>st</sup> year	2 <sup>nd</sup> year	3 <sup>rd</sup> year	4 <sup>th</sup> year	Total
<b>78.76</b>	<b>118.15</b>	<b>118.5</b>	<b>78.76</b>	<b>393.81</b>

In Nagore district following 4 clusters and 12 villages have been identified for the pilot study:- **(Table-28)**

S.N.	Cluster	Villages identified	No. of households	Total no. of Animals
1	Khanwar	Khanwar	132	929
2		Ratanga	322	2287
3		Somana	546	3327
4	Tarnau	Tarnau	518	3582
5		Dehri	204	1675
6		Rohina	278	2456
7	Harsolav	Harsolav	812	11658
8		Kadvasro Ki Dhani	104	1708
9		Bhatio Ki Dhani	91	1334
10	Lambajatan	Beetan	283	3607
11		Poondloo	384	5973
12		Lambajatan	336	6052

During the year 2013-14 following activities were carried out in the above selected clusters

S.No.	Activity	Total progress from 01-04-2013 to 31-03-2014 (year 2013-14)
1	Vaccination	9989
2	Treatment	16789
3	Castration	1004
4	Deworming	58032
5	Infertility	1470
6	Surgery	425
7	Pregnancy Diagnosis	1100
8	Livestoc Owner Benefitted	6078
9	Medicine distribution	4505
10	Artificial Insemination	1261

## **GRANT RECEIVED NPCBB-II :**

GOI has released a sum of Rs. 2544.24 lac upto March-2014. It was also instructed that the intrest amount accrued for NPCBB funds (311.51 lac up to 31.03.2013) should also be treated as grant for furnishing activities under NPCBB Phase – II.

### **Physical Progress of NPCBB Phase-II:**

## **L. NPCBB PHASE-II : PHYSICAL PROGRESS (CONSOLIDATED)**

**Upto 2013-14**

**(Table-30)**

S. N.	Project Components	Targets	Achievements 2013-14		Remarks
			Phy.	Fin.	
<b>1</b>	<b>Strengthening of LN<sub>2</sub> transport and distribution system:</b>				
(i)	Semen stations	2	2	40.00	<ul style="list-style-type: none"> <li>• FSB, Bassi</li> <li>• GPS Narwa</li> </ul>
(ii)	Strengthening existing semen banks	7	7	30.73	Jaipur, Jodhpur, Ajmer, Bikaner, Kota, Udaipur, Bhartpur
(iii)	New semen banks (Bharatpur)	1	1	10.01	Bharatpur
(iv)	LN <sub>2</sub> storage and transport system	<ul style="list-style-type: none"> <li>• Vertical Silos-6</li> <li>• 55 Ltrs capacity LN transport containers-560</li> <li>• LN transport vehicle &amp; Tanker-7</li> </ul>	<ul style="list-style-type: none"> <li>• Vertical Silos-6(3000kg) and 1silo (6000kg)</li> <li>• 55 Ltrs capacity LN transport containers-831</li> <li>• LN transport vehicle &amp; Tanker-28</li> </ul>	314.98	<ul style="list-style-type: none"> <li>• Three Vertical Silos procured from the fund of NPCBB PH-I</li> <li>• Instead of Mounted tanker, MUV purchased</li> </ul>

S. N.	Project Components	Targets	Achievements 2013-14		Remarks
			Phy.	Fin.	
<b>2</b>	<b>Bull production programme</b>				
<b>(i)</b>	<b>Murrah bull production programme</b>			94.38	0
<b>a</b>	Milk Recording Scheme	1000	905	0	0
<b>b</b>	Rearing of Male Buff. calves at CRS	180	175	0	0
<b>c</b>	Rearing of Male Buff. calves at Farmer's doorstep	60	59	0	0
<b>(ii)</b>	<b>Indigenous cattle bull production programme</b>			83.87	
<b>a</b>	Milk Recording Scheme	2000	1657		0
<b>b</b>	Rearing of Male Cattle calves at CRS	150	264		0
<b>c</b>	Rearing of Male Buff. calves at Farmer's doorstep	480	115		0
<b>(iii)</b>	Import of embryos	0	0		0
<b>(iv)</b>	Import of semen straws	0	0		0
<b>3</b>	<b>Procurement of bulls for natural service</b>				
<b>(i)</b>	Procurement of Breeding Bulls @ 10000/-	300	118	94.60	0
<b>(ii)</b>	Insurance of male calves	300		0	
<b>(iii)</b>	Testing of bulls against STD's (including Karyo typing)	300		0	
<b>4</b>	<b>Support to SIAs, Breeders' Association , Gausalas, Cooperatives, NGOs for field performance Recording</b>				
<b>(i)</b>	Progeny testing programme (For Rathi & Tharparkar)	60	20 Rathi Bulls	18.65	0
<b>(ii)</b>	Implementing ONBS with MOET (CVAS)	1	1	205.00	Open Nucleus Rathi Breeding Farm at Bikaner
<b>(iii)</b>	Strengthening of bull mother farms (RCDF)	1	1	44.00	Exotic Nucleus Farm at Bassi
<b>5</b>	<b>Strengthening of AI network</b>				
<b>(i)</b>	Strengthening of semen stations	1	1	38.00	FSB Bassi
<b>(ii)</b>	Establishment of new semen stations	1	1	680.00	V.silo 3000 lit. Narwa Khichiyan
<b>(iii)</b>	Procurement of AI bulls	100	87	34.00	ENF Bassi
<b>6</b>	<b>Strengthening of field AI network</b>				
<b>(i)</b>	Establishment of private AI workers	100	1447	95.11	0
<b>(ii)</b>	Conversion of AI centres into mobile	640	1639	100.00	130 Portable Jars were provided to the centres
<b>(iii)</b>	Strengthening NGO/ Voluntary organization AI centres	40 AI Centres	0	0.36	0
<b>7</b>	<b>Man Power Development</b>				
<b>(i)</b>	Training of private AI workers	400	1077	0	0
<b>(ii)</b>	Training of existing AI workers	1600	2219	0	0
<b>(iii)</b>	Training of professionals	40	50	7.86	0
<b>(iv)</b>	Training of professionals abroad	2	0	0	0
<b>8</b>	<b>Strengthening/ establishment of training centres for AI workers</b>				
<b>9</b>	<b>Assistance to private AI workers</b>				
<b>10</b>	<b>Assistance to SIA</b>				
<b>(i)</b>	Managerial grants to SIA	1	1	92.92	0

S. N.	Project Components	Targets	Achievements 2013-14		Remarks
			Phy.	Fin.	
(ii)	Computerization and MIS	20	2 Computers + 2 Laser Printers + Multi Tally Software + Web Site Design + Other Recurring Expenditure	8.49	0
(iii)	Concurrent evaluation	0	0	15.32	0
<b>11</b>	<b>Sexual health control programme</b>				
(i)	Organization of fertility camps	1632	1304	163.09	In the year 13-14 Fund Release for 560 but camps to be organised in the year 2014-15

**N. RLDB Balance-Sheet as on 31 March 2014**

**RAJASTHAN LIVE STOCK DEVELOPMENT BOARD, JAIPUR  
SCHEME: CONSOLIDATE  
Balance Sheet  
as on 31st March 2014**


Liabilities	Amount	Assets	Amount
<b>General Fund:-</b>	<b>472,953,822.65</b>	<b>Fixed Assets</b>	<b>2,843,061.32</b>
Opening Balance (As Per Annexure "H")	323,593,671.65	(As Per Annexure "L")	
Add-Surpls	0.00		
Add:-Rectified Advances	149360151.00	<b>Security Deposits</b>	
		Telephone Department	5420.00
<b>Unutilised Fund</b>	<b>2903806.82</b>	BSNL Jaipur	2000.00
(As Per Annexure "I")		JVVNL LTD	29680.00
		Sec For GAS Connection	750.00
<b>Development Fund</b>	<b>55906980.38</b>	Shyam Tel Ltd	750.00
(As Per Annexure "J")		Telephone Department	3000.00
		Akash Optifibre Ltd	999.00
<b>Reserve &amp; Surplus</b>	<b>4673262.79</b>		
Assets Reserve Fund		<b>Development Fund Advances</b>	<b>654358.00</b>
<b>Current Liabilities</b>	<b>22057529.00</b>	<b>Current Assets</b>	<b>26245811.75</b>
(As Per Annexure "K")		(As Per Annexure "M")	
		<b>Closing Balances</b>	<b>528,709,571.57</b>
		Cash In Hand	0.00
		Bank	450,615,617.47
		(As Per Annexure "F")	
		Loans & Advances	78093954.10
		(As Per Annexure "G")	
<b>Total</b>	<b>558,495,401.64</b>	<b>Total</b>	<b>558,495,401.64</b>

FOR MANOJ MANMAL JAIN & ASSOCIATES


PLACE :- JAIPUR

CHARTERED ACCOUNTANTS

DATE :- 22/09/2014

  
Chief Executive Officer  
Raj. Livestock Development Board  
Jaipur

  
Financial Advisor  
Raj. Livestock Development Board  
Jaipur

  
(MANOJ JAIN)  
PROPRIETOR

## O. RLDB Receipt of Schems as on 31 March 2014

**RAJASTHAN LIVE STOCK DEVELOPMENT BOARD, JAIPUR**  
**SCHEME: CONSOLIDATE**  
**Receipt Of Schems**  
**for the year ending 31st March 2014**

**ANNEXURE "D"**

S.No.	SCHEME	Receipt From GOI	Receipt From GOR	Receipt From Districts	Interest	Other Receipts	Total
1	AI FEES	0.00	0.00	61875660.00	9142907.00	3626772.00	74645339.00
2	Bull Reserve Cost	0.00	0.00	447000.00	513.00	0.00	447513.00
3	C.FAIR	0.00	0.00	10055013.00	1337185.00	12850.00	11405048.00
4	CMFM	0.00	0.00	20364959.00	409187.00	100000000.00	120774146.00
5	D.FUND	0.00	0.00	0.00	0.00	10871558.00	10871558.00
6	EFST	0.00	0.00	0.00	412.00	0.00	412.00
7	FARM ST.	0.00	0.00	1236641.00	45151.00	651240.00	1933032.00
8	FS Lab & PTP	0.00	0.00	0.00	0.00	0.00	0.00
9	J.K.TRUST	0.00	192121.00	0.00	187795.00	0.00	379916.00
10	LIS	0.00	0.00	0.00	315571.00	0.00	315571.00
11	LSA TRG	0.00	0.00	0.00	1014596.05	2721624.00	3736220.05
12	M.UNIT	0.00	0.00	0.00	0.00	0.00	0.00
13	NMPS	41677000.00	0.00	0.00	10959.00	0.00	41687959.00
14	NRAA	0.00	0.00	0.00	237995.00	0.00	237995.00
15	NPCBB-1	0.00	0.00	0.00	448.00	0.00	448.00
16	NPCBB-2	0.00	0.00	0.00	749.00	0.00	749.00
17	NPCBB PH	0.00	0.00	0.00	1186281.00	1450216.00	2636497.00
18	RKVY	0.00	633314.00	0.00	202950.00	91865.00	928129.00
19	SWISS	2400000.00	0.00	0.00	197128.00	0.00	2597128.00
20	PTP	0.00	0.00	0.00	0.00	0.00	0.00
	<b>Total</b>	<b>44077000.00</b>	<b>825435.00</b>	<b>93979273.00</b>	<b>14289827.05</b>	<b>119426125.00</b>	<b>272597660.05</b>

FOR MANOJ MANMAL JAIN & ASSOCIATES

CHARTERED ACCOUNTANTS

PLACE :- JAIPUR

DATE :- 22/09/2014



*[Signature]*  
**Chief Executive Officer**  
 Raj. Livestock Development Board  
 Jaipur

*[Signature]*  
**Financial Advisor**  
 Rajasthan Livestock Dev. Board  
 Rej., Jaipur

(MANOJ JAIN)  
 PROPRIETOR

**P. RLDB Payment of Schems as on 31 March 2014**

3

**RAJASTHAN LIVE STOCK DEVELOPMENT BOARD, JAIPUR**  
**SCHEME: CONSOLIDATE**  
**Payment Of Schems**  
**for the year ending 31st March 2014**

		ANNEXURE "E"
S.N.	SCHEME	Amount
1	AI FEES	52338583.00
2	Bull Reserve Cost	124802.00
3	C.FAIR	11680499.00
4	CMFM	6972415.00
5	D.FUND	22468761.86
6	EFST	42148.00
7	FARM ST.	2300.00
8	FS Lab & PTP	0.00
9	J.K.TRUST	0.00
10	LIS	10897488.86
11	LSA TRG	240240.00
12	M.UNIT	770439.00
13	NMPS	134971574.00
14	NRAA	3597251.00
15	NPCBB-1	65099.00
16	NPCBB-2	161473.00
17	NPCBB PH II	18619114.00
18	RKVY	14579721.00
19	SWISS	733760.00
20	PTP	15000.00
	<b>Total</b>	<b>278280668.72</b>

FOR MANOJ MANMAL JAIN & ASSOCIATES  
 CHARTERED ACCOUNTANTS

PLACE :- JAIPUR  
 DATE :- 22/09/2014



*[Signature]*  
**Chief Executive Officer**  
 CEO, RLDB  
 Raj. Livestock Development Board  
 Jaipur

*[Signature]*  
**Financial Advisor**  
 F.A. RLDB  
 Rajasthan Livestock Dev. Board  
 Raj., Jaipur

(MANOJ JAIN)  
 PROPRIETOR